

# **BSP SCREWED FITTINGS**

## **CONTENTS**

## **PAGE**

316 Stainless Steel, Bronze, Aluminium  
& Glass Reinforced Nylon

1 -11

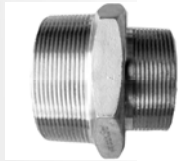
# BSP SCREWED FITTINGS

## HEX NIPPLE



Size	Part Number	316 S/ Steel	Bronze	Aluminium	Nylon
	CODE	S01	B01	A01	N01
1/8	003	5.65			1.95
1/4	006	5.65	5.80		1.95
3/8	010	6.20	5.80		1.95
1/2	015	7.75	8.60		2.20
3/4	020	10.30	11.45		2.95
1	025	15.05	17.15	29.10	3.35
1¼	032	21.70	27.45	29.10	4.30
1½	040	27.30	34.30	29.70	6.25
2	050	41.00	59.25	40.00	8.65
2½	065	81.60	87.20	56.65	31.50
3	080	108.50	120.40	73.30	35.70
4	100	178.60	200.40	88.90	73.65

## REDUCING NIPPLE



Size	Part Numer	316 S/ Steel	Bronze	Aluminium	Nylon
	CODE	S02	B02	A02	N02
1/4 x 1/8	0603	7.85	4.25		2.25
3/8 x 1/4	1006	8.65	7.70		2.25
1/2 x 1/4	1506	9.50	10.80		2.25
1/2 x 3/8	1510	9.50	10.80		2.25
3/4 x 1/4	2006	13.05	14.30		
3/4 x 3/8	2010	13.05	14.30		2.95
3/4 x 1/2	2015	13.05	14.30		2.95
1 x 1/2	2515	17.35	21.90		3.60
1 x 3/4	2520	17.35	21.90		3.60
1¼ x ¾	3220	23.60	35.60		4.30
1¼ x 1	3225	23.60	35.60		4.30
1½ x ¾	4020	30.00	44.55		5.65
1½ x 1	4025	30.00	44.55		5.65
1½ x 1¼	4032	30.00	44.55		5.65
2 x 1	5025	42.95	77.00		7.75
2 x 1¼	5032	42.95	77.00		7.75
2 x 1½	5040	42.95	77.00		7.75
2½ x 2	6550	74.00	113.20		28.15
3 x 2	8050	104.95	156.60		32.85
3 x 2½	8065	104.95	156.60		32.85
4 x 3	10080	164.30	271.75		60.40

# BSP SCREWED FITTINGS

## SOCKET



Size	Part Number	316 S/Steel	Bronze	Aluminium	Nylon
	CODE	S03	B03	A03	N03
1/8	003	5.05			
1/4	006	5.05		17.05	
3/8	010	6.30		17.05	
1/2	015	6.60	7.90	19.30	5.15
3/4	020	9.45	10.50	20.45	6.50
1	025	13.40	15.80	26.25	8.45
1¼	032	20.55	24.70	26.25	10.05
1½	040	26.25	33.60	27.95	11.70
2	050	42.15	55.35	35.95	18.65
2½	065	73.30	88.95	50.95	50.85
3	080	102.85	123.50	59.30	62.40
4	100	190.90	206.20	79.95	151.65

## REDUCING SOCKET



Size	Part Number	316 S/Steel	Bronze	Aluminium	Nylon
	CODE	S04	B04	A04	N04
3/8 x 1/4	1006	9.00			
1/2 x 1/4	1506	10.55			
1/2 x 3/8	1510	10.55			
3/4 x 1/2	2015	14.75			6.50
1 x 3/8	2510	23.85			
1 x 1/2	2515	23.85			8.45
1 x 3/4	2520	23.85			8.45
1¼ x ½	3215	29.70			
1¼ x ¾	3220	29.70			10.35
1¼ x 1	3225	29.70			10.35
1½ x ½	4015	37.35			
1½ x ¾	4020	37.35			11.70
1½ x 1	4025	37.35			11.70
1½ x 1¼	4032	37.35			11.70
2 x ½	5015	48.85			
2 x ¾	5020	48.85			18.65
2 x 1	5025	48.85			18.65
2 x 1¼	5032	48.85			18.65
2 x 1½	5040	48.85			18.65
2½ x 2	6550	81.20			62.10
3 x 2	8050	114.05			79.90
3 x 2½	8065	114.05			79.90
4 x 3	10080	138.15			183.45

# BSP SCREWED FITTINGS

## REDUCING BUSH



Size	Part Number	316 S/Steel	Bronze	Aluminium	Nylon
	CODE	S05	B05	A05	N05
1/4 x 1/8	0603	4.80	3.75		
3/8 x 1/4	1006	5.30	3.75		
1/2 x 1/8	1503	6.30	5.55		3.35
1/2 x 1/4	1506	6.30	4.65		3.35
1/2 x 3/8	1510	6.30	4.65		3.35
3/4 x 1/4	2006	8.55	7.80		3.70
3/4 x 3/8	2010	8.55	6.45		3.70
3/4 x 1/2	2015	8.55	6.45		3.70
1 x 1/4	2506		11.80		4.20
1 x 3/8	2510		11.80		4.20
1 x 1/2	2515	12.30	9.84		4.20
1 x 3/4	2520	12.30	9.84		4.20
1 1/4 x 3/4	3220	20.10	20.00		5.55
1 1/4 x 1	3225	20.10	20.00		5.55
1 1/2 x 3/4	4020	27.05	25.85		5.85
1 1/2 x 1	4025	27.05	21.20		5.85
1 1/2 x 1 1/4	4032	27.05	21.20		5.85
2 x 3/4	5020	43.65			6.95
2 x 1	5025	43.65	37.80		6.95
2 x 1 1/4	5032	43.65	31.40		6.95
2 x 1 1/2	5040	43.65	31.40		6.95
2 1/2 x 1 1/2	6540	77.00			28.90
2 1/2 x 2	6550	77.00	62.80		28.90
3 x 2	8050	106.95	92.25		38.30
3 x 2 1/2	8065	106.95	92.25		38.30
4 x 3	10080	184.80	203.00		68.55

## HEX CAP



Size	Part Number	316 S/Steel	Bronze	Aluminium	Nylon
	CODE	S06	B06	A06	N06
1/4	006	4.95	4.40		
3/8	010	5.35	4.40		
1/2	015	6.35	5.95		2.85
3/4	020	9.00	7.80		2.90
1	025	13.15	12.20		3.80
1 1/4	032	22.50	18.45		5.60
1 1/2	040	26.25	24.95		6.55
2	050	46.35	42.40		8.15
2 1/2	065	78.40	78.45		
3	080	115.35	120.00		
4	100	178.80	230.65		

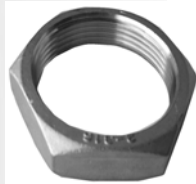
# BSP SCREWED FITTINGS

## HEX PLUG



Size	Part Number	316 S/Steel	Bronze	Aluminium	Nylon
	<b>CODE</b>	<b>S07</b>	<b>B07</b>	<b>A07</b>	<b>N07</b>
1/8	003	5.25	3.90		1.95
1/4	006	5.25	3.90		1.95
3/8	010	5.80	4.45		1.95
1/2	015	6.90	7.05		1.95
3/4	020	9.15	8.10		2.05
1	025	12.95	10.55		2.25
1¼	032	20.50	15.80		3.35
1½	040	25.85	20.05		4.00
2	050	44.40	31.65		5.15
2½	065	65.85	52.70		27.95
3	080	99.90	84.40		39.90
4	100	144.65	158.16		76.20

## LOCKNUT



Size	Part Number	316 S/Steel	Bronze	Aluminium	Nylon
	<b>CODE</b>	<b>S08</b>	<b>B08</b>	<b>A08</b>	<b>N08</b>
1/4	006	4.00			
3/8	010	4.90			
1/2	015	5.70	4.65		
3/4	020	6.90	5.55		
1	025	8.10	8.30		
1¼	032	10.00	12.60		
1½	040	15.90	16.25		
2	050	20.95	25.85		
2½	065	47.55	46.15		
3	080	60.05	73.80		
4	100	98.30	147.60		

## 90° FEMALE ELBOW



Size	Part Number	316 S/Steel	Bronze	Aluminium	Nylon
	<b>CODE</b>	<b>S09</b>	<b>B09</b>	<b>A09</b>	<b>N09</b>
1/4	006	6.50	6.80		
3/8	010	8.60	6.80		
1/2	015	10.25	9.50		5.95
3/4	020	12.95	12.90		6.25
1	025	18.75	19.80		6.95
1¼	032	28.40	31.60		10.05
1½	040	39.10	39.55		11.70
2	050	56.10	64.25		15.70
2½	065	127.45	122.50		109.90
3	080	174.90	187.75		141.00
4	100	268.05	434.65		207.40

# BSP SCREWED FITTINGS

## 90° ELBOW M/F



Size	Part Number	316 S/Steel	Bronze	Aluminium	Nylon
	CODE	S10	B10	A10	N10
1/4	006	8.70	9.50		
3/8	010	9.45	9.50		
1/2	015	11.55	11.90		5.80
3/4	020	16.60	16.80		6.50
1	025	23.05	27.70		7.30
1¼	032	35.10	42.55		10.05
1½	040	44.10	55.35		11.95
2	050	69.25	93.85		15.70
2½	065	127.85	138.30		
3	080	187.10	207.45		
4	100	310.60	622.40		

## 45° ELBOW F/F



Size	Part Number	316 S/Steel	Bronze	Aluminium	Nylon
	CODE	S12	B12	A12	N12
1/4	006	8.40			
3/8	010	9.65			
1/2	015	11.30			
3/4	020	16.35			
1	025	22.50			
1¼	032	33.65			
1½	040	48.10			
2	050	67.40			
2½	065	112.60			
3	080	179.90			
4	100	314.55			

## BARRELL UNION



Size	Part Number	316 S/Steel	Bronze	Aluminium	Nylon
	CODE	S17	B17	A17	N17
1/4	006	18.40	20.80		
3/8	010	19.65	22.70		
1/2	015	24.90	26.65		20.85
3/4	020	31.60	31.40		28.90
1	025	47.20	41.60		36.55
1¼	032	65.65	60.95		50.90
1½	040	81.50	72.00		54.80
2	050	116.20	110.70		67.85
2½	065	220.20			
3	080	281.80	313.60		
4	100	458.30	691.80		

# BSP SCREWED FITTINGS

## MALE HOSETAIL

### BSP x Hosetail



Size	Part Number	316 S/Steel	Bronze	Aluminium	Nylon
<i>BSP x Hosetail</i>	<i>CODE</i>	<i>S21</i>	<i>B21</i>	<i>A21</i>	<i>N21</i>
1/8 x 1/4	0306	9.55			
1/4 x 1/4	006	9.55			3.65
1/4 x 5/16	0608	10.30			
1/4 x 3/8	0610	10.30			3.65
1/4 x 1/2	0615	10.30			
3/8 x 3/8	010	10.25			4.20
3/8 x 1/2	1015	14.65			5.20
1/2 x 1/2	015	13.80	15.55		5.95
1/2 x 3/8	1510	17.95			5.40
1/2 x 5/8	1518	17.95	POA		
1/2 x 3/4	1520	17.95	POA		10.30
1/2 x 1	1525	17.95			10.30
1/2 x 1 1/4	1532				10.30
3/4 x 3/4	020	17.75	25.30		7.40
3/4 x 1/2	2015	22.95	29.85		11.40
3/4 x 5/8	2018		POA		
3/4 x 1	2025	25.55			11.40
3/4 x 1 1/4	2032				11.40
1 x 1	025	23.00	41.85	28.70	8.65
1 x 1/2	2515				13.90
1 x 5/8	2518		POA		
1 x 3/4	2520		34.90		13.90
1 x 1 1/4	2532	42.30	51.95	33.00	13.90
1 x 1 1/2	2540				13.90
1 1/4 x 1 1/4	032	30.30	54.35	25.65	10.55
1 1/4 x 3/4	3220				16.00
1 1/4 x 1	3225		42.35	30.70	16.00
1 1/4 x 1 1/2	3240	85.90	47.25	30.70	16.00
1 1/4 x 2	3250				16.00
1 1/2 x 1 1/2	040	42.95	72.90	26.75	12.85
1 1/2 x 3/4	4020				16.65
1 1/2 x 1	4025		POA		16.65
1 1/2 x 1 1/4	4032		63.25		16.65
1 1/2 x 1 1/2	4045		POA		
1 1/2 x 2	4050	144.65	76.65	32.55	16.65
2 x 2 1/4	4058				
2 x 2	050	66.10	82.60	36.45	14.30
2 x 1	5025				19.55
2 x 1 1/4	5032				19.55
2 x 1 1/2	5040				19.55
2 x 1 3/4	5045				
2 x 2 1/4	5058				
2 x 2 1/2	5065	173.85			
2 1/4 x 2 1/4	058				
2 1/2 x 2 1/2	065	93.65	145.70		
2 1/2 x 2	6550				
2 1/2 x 3	6580	196.90			
3 x 3	080	151.50	211.65		
3 x 4	80100	276.60			
4 x 4	100	247.85	319.20		

# BSP SCREWED FITTINGS

## EQUAL TEE



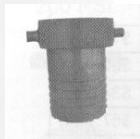
Size	Part Number	316 S/Steel	Bronze	Aluminium	Nylon
	CODE	S18	B18	A18	N18
1/4	006	11.30	8.15		
3/8	010	12.40	8.15		
1/2	015	16.60	10.35		6.55
3/4	020	17.55	14.80		7.30
1	025	25.30	26.25		8.85
1¼	032	38.40	36.90		15.70
1½	040	50.20	50.70		16.90
2	050	75.45	83.10		23.40
2½	065	175.20	156.80		138.25
3	080	237.60	239.90		207.40
4	100	374.80	553.45		318.00

## SKIN FITTING



Size	Part Number	316 S/Steel	Bronze	Aluminium	Glass Reinforced Nylon 6 c/w Hosetail
	CODE	S22	B22	A22	N22
1/2	015	40.44	23.60		13.25
3/4	020	49.10	29.30		14.60
1	025	72.35	43.00		17.00
1¼	028				19.15
1½	032	84.10	52.90		22.20
2	040	99.55	65.70		27.80
2½	050	152.84	88.85		
3	065	223.30	137.25		
4	080	249.50	166.20		
4	100	340.00			

## NUT & TAIL



Size	Part Number	316 S/Steel	Bronze	Aluminium	Nylon
	CODE	S23	B23	A23	N23
¼ x ¼	006	19.85			
3/8 x 3/8	010	19.85			
1/2	015	23.80			11.10
3/4 X 1/2	2015				14.15
3/4	020	32.20			14.40
1 x ¾	2520				16.90
1	025	45.40			17.10
1¼ x 1	3225				
1¼	032	65.45			21.85
1½ x 1¼	4032				
1½	040	85.20			23.50
2 x 1½	5040				
2	050	100.10			25.15
	058				
	6558				
	8065				
	080				

# BSP SCREWED FITTINGS

## FEMALE HOSETAIL



Size	Part Number	316 S/Steel	Bronze	Aluminium	Nylon
	<b>CODE</b>	<b>S24</b>	<b>B24</b>	<b>A24</b>	<b>N24</b>
1/8	003	19.30			
1/4	006	20.80			
3/8	010	22.75			
1/2	015	33.35			15.05
1/2 x 3/4	1520				15.05
1/2 x 1	1525				15.05
3/4	020	44.30			16.60
3/4 x 1/2	2015				16.60
3/4 x 1	2025				16.60
3/4 x 1 1/4	2032				16.60
3/4 x 1 1/2	2040				16.60
1	025	51.00			18.15
1 x 1/2	2515				18.15
1 x 3/4	2520				18.15
1 x 1 1/4	2532				18.15
1 x 1 1/2	2540				18.15
1 1/4	032	72.45			20.10
1 1/4 x 3/4	3220				20.10
1 1/4 x 1	3225				20.10
1 1/4 x 1 1/2	3240				20.10
1 1/4 x 2	3250				20.10
1 1/2	040	88.75			23.00
1 1/2 x 3/4	4020				23.00
1 1/2 x 1	4025				23.00
1 1/2 x 1 1/4	4032				23.00
1 1/2 x 2	4050				23.00
2	50	141.35			26.70
2 x 1 1/4	5032				26.70
2 x 1 1/2	5040				26.70

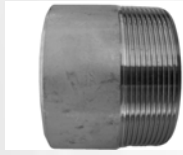
## BARRELL NIPPLE



Size	Part Number	316 S/Steel	Bronze	Aluminium	Nylon
	<b>CODE</b>	<b>S26</b>	<b>B26</b>	<b>A26</b>	<b>N26</b>
3/8	010	5.45			
1/2	015	8.60			
3/4	020	11.15			
1	025	17.20			
1 1/4	032	28.70			
1 1/2	040	35.50			
2	050	60.70			
2 1/2	065	102.75			
3	080	162.70			
4	100	212.95			

# BSP SCREWED FITTINGS

## TOE NIPPLE



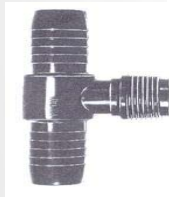
Size	Part Number	316 S/Steel	Bronze	Aluminium	Nylon
	<b>CODE</b>	<b>S27</b>	<b>B27</b>	<b>A27</b>	<b>N27</b>
3/8	010	5.60			
1/2	015	5.90			
3/4	020	8.20			
1	025	12.70			
1 1/4	032	19.80			
1 1/2	040	22.95			
2	050	32.15			
2 1/2	065	59.95			
3	080	85.90			
4	100	147.40			

## BARBED HOSE TEE



Size	Part Number	316 S/Steel	Bronze	Aluminium	Nylon
	<b>CODE</b>	<b>S28</b>	<b>B28</b>	<b>A28</b>	<b>N28</b>
1/2	015				11.40
3/4	020				11.75
1	025				15.65
1 1/4	032				17.10
1 1/2	040				25.10
2	050				28.70

## MALE BARBED TEE



Size	Part Number	316 S/Steel	Bronze	Aluminium	Nylon
	<b>CODE</b>	<b>S29</b>	<b>B29</b>	<b>A29</b>	<b>N29</b>
1/2	015				11.40
3/4	020				11.75
1	025				15.65
1 1/4	032				17.10
1 1/2	040				25.10
2	050				28.70

# BSP SCREWED FITTINGS

## BARBED HOSE ELBOW



Size	Part Number	316 S/Steel	Bronze	Aluminium	Nylon
	CODE	S30	B30	A30	N30
½	015				11.20
¾	020				14.50
1	025				18.60
1¼	032				19.90
1½	040				23.50
2	050				24.80

## MALE BARBED HOSE ELBOW



Size	Part Number	316 S/Steel	Bronze	Aluminium	Nylon
	CODE	S31	B31	A31	N31
½	015				11.20
¾	020		48.40		14.50
¾ x 1	2025		47.30		
1	025		69.60		18.60
1 x ¾	2520		48.40		
1 x 1¼	2532		82.60		
1¼	032		90.00		19.90
1¼ x 1½	3240		141.75		
1½	040		157.50		23.50
1½ x 2	4050		204.55		
2	050		220.50		24.80

## BARBED HOSE JOINER



Size	Part Number	316 S/Steel	Bronze	Aluminium	Nylon
	CODE	S32	B32	A32	N32
½	015				10.45
¾	020				10.80
¾ x ½	2015				11.10
1	025				12.20
1 x ½	2515				13.85
1 x ¾	2520				15.50
1¼	32				15.50
1¼ x ½	3215				15.50
1¼ x ¾	3220				15.50
1¼ x 1	3225				15.50
1½	40				19.10
1½ x ½	4015				19.10
1½ x ¾	4020				19.10
1½ x 1	4025				19.10
1½ x 1¼	4032				19.10
2	50				25.10
2 x 1	5025				25.10
2 x 1¼	5032				25.10
2 x 1½	5040				25.10

# BSP SCREWED FITTINGS

## POLY TANK OUTLET



Size	Part Number	List Price
½	SFTF15	15.00
¾	SFTF20	15.00
1	SFTF25	15.00
1¼	SFTF32	28.40
1½	STFT40	38.45
2	SFTF50	50.10

## ALUMINIUM 90° SOCKET WELD ELBOW

Cast in a marine grade Aluminium—CC601, and is suitable for butt welding the elbow to aluminium tube.



Code	Size	Wall Thickness	Lead in for tube	Radius through centre	Price
A34-040	40mm	3mm	15mm	32mm	POA
A34-048	48.4mm	4.47mm	15mm	45mm	POA
A34-050	50mm	5mm	15mm	45mm	POA
A34-063	63.5mm	6.35mm	15mm	50mm	POA
A34-076	76.2mm	6.35mm	20mm	62mm	POA
A34-089	88.9mm	6.35mm	20mm	70mm	POA