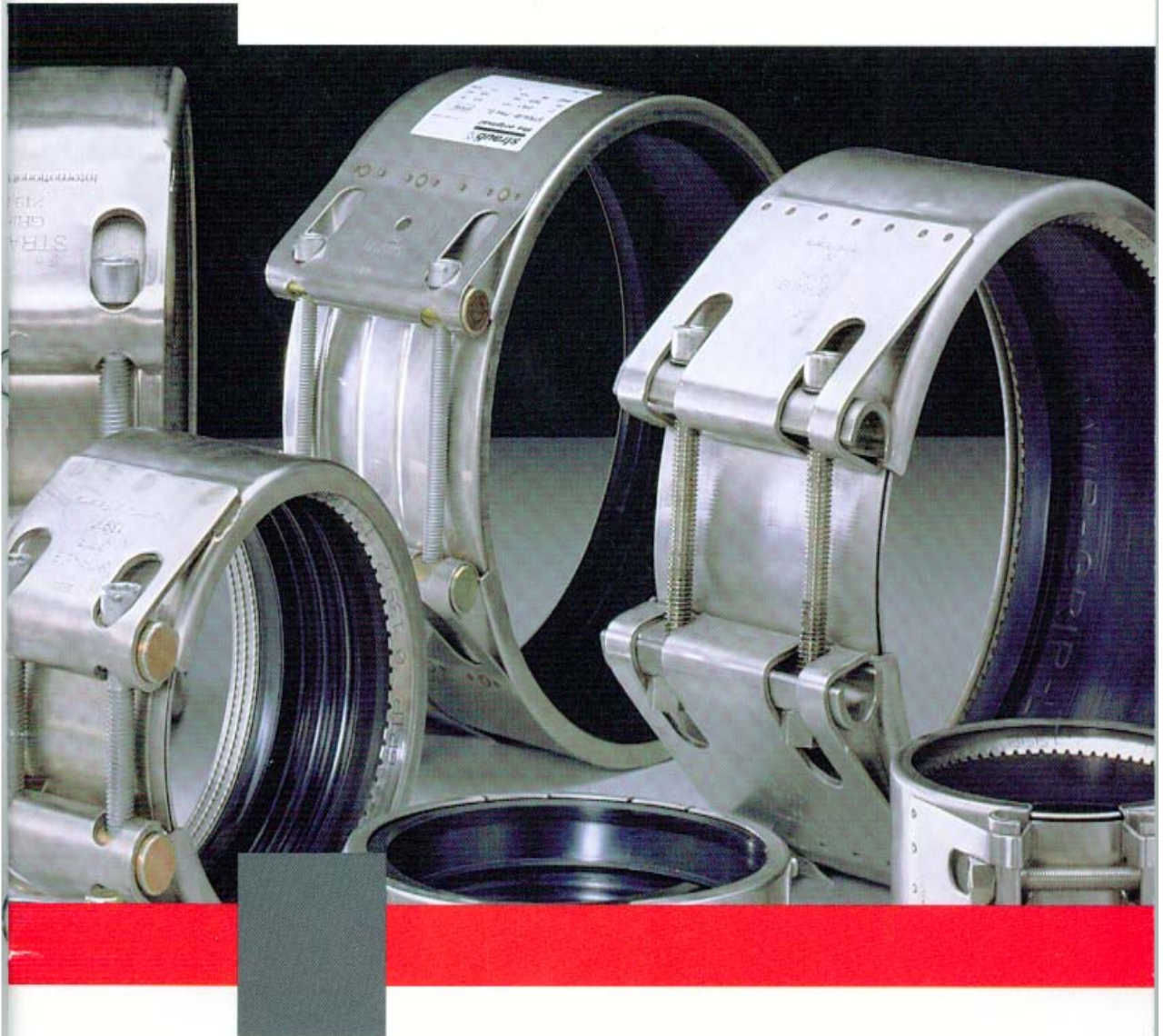


STRAUB PIPE COUPLINGS

Safety you can trust.



Manual

straub 
the original

Marine Systems Australia Pty Ltd
All prices exclude GST and are subject to change

Page 1
Marine Systems Australia Pty Ltd 2009

All business undertaken in accordance with our standard terms and conditions of trade
Effective September 2009

COPYRIGHT 2009

The basic concept



Two types of STRAUB couplings

A unique technical principle: two basic types, but with innumerable applications.

Wherever pipes have to be joined together. That is the secret of STRAUB pipe joints. Their safety and reliability have been examined and certificated by public authorities, insurance companies, technical inspectorates and licensing institutions for all the major industrial sectors in most industrial countries.

STRAUB-GRIP

STRAUB-FLEX / -REP



Pull out resistant

Axially flexible



Six products



STRAUB-METAL-GRIP



STRAUB-GRIP-L



STRAUB-FLEX



STRAUB-COMBI-GRIP



STRAUB-PLAST-GRIP



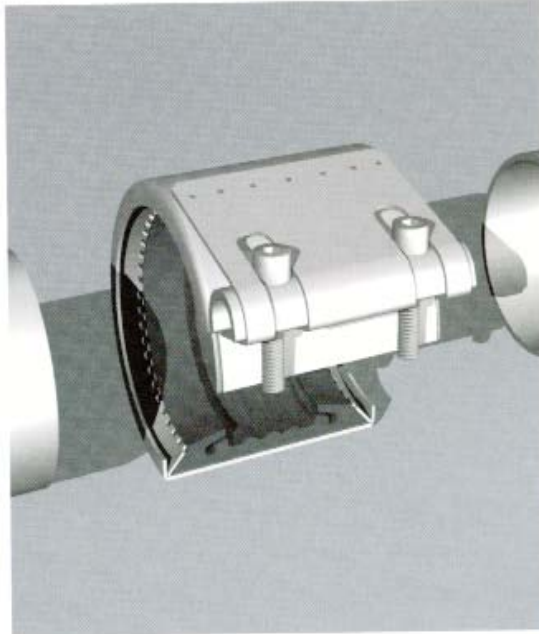
STRAUB-REP

STRAUB-GRIP-L

Standard duty – for industrial plant construction up to 80°C

STRAUB-GRIP-L is the light standard coupling series of STRAUB. It is suitable particularly for lighter pipes within the lower pressure range. For shipbuilding, water and waste water treatment plants, industrial process pipework and many other applications. Whether pressure or suction lines, all piping systems are installed quickly, safely and economically with STRAUB-GRIP-L. A special advantage is the light weight and the one screw on the small diameters.

Working pressure up to 46 bar
 Outside diameters 26.9 up to 609.6 mm
 Temperature range -20°C up to +80°C
 100% Stainless Steel Construction
 Example for order:
 STRAUB-GRIP-L 273.0, EPDM, SS



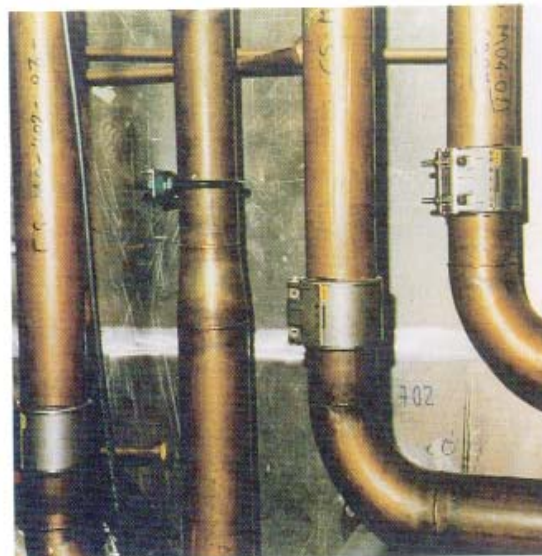
Fast ferry "Corsaire 6000" STRAUB-GRIP-L at CuNiFe sea water system

On average 3'000 couplings per ship in diameters 48.3 – 219.1 mm:

Weight savings in comparison to flange:
 24 Tons

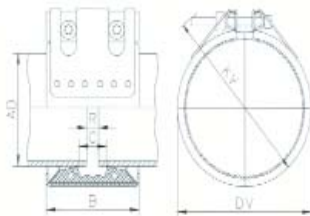
Weight savings in comparison to other couplings:
 2.1 Tons

Benefits:
 More payload
 Lower transport costs
 Easy fitting



Specification STRAUB-GRIP-L Ø 26.9 – 219.1 mm

Components / Materials	W1	W2	W4	W5
Casing				AISI 316 Ti
Screws				AISI 316 L
U-bolts				AISI 316 Ti
Anchoring ring				AISI 301
Strip insert (option)				AISI 316 L / PVDF / HDPE
Sealing sleeve	Temp.: 20°C up to +80°C			
EPDM	Medium: all qualities of water, waste water, air solids and chemical products			
Sealing sleeve	Temp.: 20°C up to +80°C			
NBR	Medium: water, gas, oil, fuel and other hydrocarbons			
Sealing sleeve	Temp.: 20°C up to +180°C			
VITON A'	Medium: ozone, oxygen, acids, gas, oil and fuel (only with strip insert)			

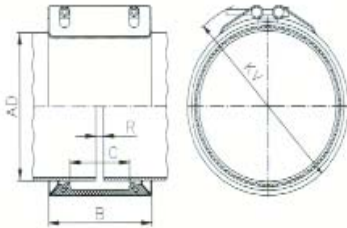


Pipe AD (mm)	Clamping range (mm)	Nominal pressure PN (bar)	Working pressure PS (bar)	Dimensional data				Setting gap between pipe ends R _{max}		Locking bolts		
				B (mm)	C (mm)	DV (mm)	KV (mm)	without strip insert (mm)	with strip insert (mm)	torque rate (Nm)	allen head (mm)	Gewinde M...
26.9	26.4 - 27.4	16	46	48	19	43	70	5	5	7.5	5	6
30.0	29.5 - 30.5	16	42	46	17	47	75	5	5	7.5	5	6
33.7	33.2 - 34.2	16	38	46	17	51	75	5	5	7.5	5	6
38.0	37.5 - 38.5	16	33	61	25	57	90	5	10	15	6	8
42.4	41.9 - 42.9	16	30	61	25	62	95	5	10	15	6	8
44.5	44.0 - 45.0	16	33	61	25	64	95	5	10	15	6	8
48.3	47.8 - 48.8	16	30	61	25	67	100	5	10	15	6	8
54.0	53.5 - 54.5	16	20	76	37	76	105	10	15	15	6	8
57.0	56.4 - 57.6	16	18	76	37	76	105	10	15	15	6	8
60.3	59.7 - 60.9	16	22	76	37	79	110	10	15	15	6	8
66.6	64.9 - 67.3	16	34	95	35	87	126	10	15	20	6	8
70.0	68.9 - 70.7	16	32	95	36	92	131	10	15	20	6	8
73.0	72.3 - 73.7	16	31	95	41	96	135	10	25	20	6	8
76.1	75.3 - 76.9	16	31	95	41	98	135	10	25	20	6	8
79.5	78.7 - 80.3	16	28	95	35	100	135	10	15	20	6	8
84.0	83.2 - 84.8	16	26	95	35	112	145	10	15	20	6	8
88.9	88.0 - 89.8	16	22	95	41	111	150	10	25	20	6	8
100.6	99.6 - 101.6	16	22	95	35	129	165	10	15	25	6	8
101.6	100.6 - 102.6	16	22	95	35	130	165	10	15	25	6	8
104.0	103.0 - 105.0	16	22	95	35	132	165	10	15	25	6	8
104.8	103.8 - 105.8	16	22	95	35	133	165	10	15	25	6	8
108.0	106.9 - 109.1	16	21	95	41	130	165	10	25	25	6	8
114.3	133.2 - 115.4	16	18	95	41	136	170	10	25	25	6	8
127.0	125.7 - 128.3	16	19	110	54	151	195	10	35	40	8	10
129.0	127.7 - 130.3	16	19	110	54	153	195	10	35	40	8	10
130.2	128.9 - 131.5	16	19	110	54	154	200	10	35	40	8	10
133.0	131.7 - 134.3	16	19	110	54	157	200	10	35	40	8	10
139.7	138.3 - 141.1	16	18	110	54	164	210	10	35	40	8	10
141.3	139.9 - 142.7	16	18	110	54	166	210	10	35	40	8	10
154.0	152.5 - 155.5	13	16	110	48	184	225	10	30	40	8	10
159.0	157.4 - 160.6	13	16	110	54	183	225	10	35	40	8	10
168.3	166.6 - 170.0	13	16	110	54	192	230	10	35	40	8	10
219.1	216.9 - 221.3	10	16	142	80	250	295	10	35	60	10	12

Right of alteration reserved.

Specification STRAUB-GRIP-L Ø 180.0 – 609.6 mm

Components / Materials	W1	W2	W4	W5
Casing		AISI 316 Ti		AISI 316 Ti
Screws		AISI 4135*		AISI 316 L
Bolts		AISI 12L 14, galvanized		AISI 316 L
Anchoring ring		AISI 301		AISI 301
Strip insert (option)		AISI 316 L / HDPE		AISI 316 L / HDPE
Sealing sleeve		Temp.: -20°C up to +80°C		
EPDM		Medium: all qualities of water, waste water, air, solids and chemical products		
Sealing sleeve		Temp.: -20°C up to +80°C		
NBR		Medium: water, gas, oil, fuel and other hydrocarbons		



Pipe AD (mm)	Clamping range (mm)	Nominal pressure PN (bar)	Working pressure PS (bar)	Dimensional data				Setting gap between pipe ends R _{max}		Locking bolts		
				B (mm)	C (mm)	braced		without strip insert (mm)	with strip insert (mm)	torque rate (Nm)	allen head (mm)	thread M...
						DV (mm)	KV (mm)					
180.0	178.0 - 182.0	-	16	141	80	205	255	10	35	50	10	12
193.7	192.0 - 195.5	-	16	141	80	224	270	10	35	50	10	12
200.0	198.0 - 202.0	-	15	141	80	230	275	10	35	50	10	12
204.0**	202.0 - 206.0	-	14	141	80	234	280	10	35	50	10	12
244.5	242.0 - 247.0	5.5	9	141	80	275	320	10	35	50	10	12
250.0	247.5 - 252.5	5.5	9	141	80	280	325	10	35	50	10	12
254.0**	251.5 - 256.5	5.5	9	141	80	284	325	10	35	50	10	12
267.0	264.5 - 269.5	5	8	141	80	297	340	10	35	50	10	12
273.0	270.5 - 275.5	4	7	141	80	303	345	10	35	50	10	12
304.0**	301.0 - 307.0	4	6	141	80	334	375	10	35	60	10	12
323.9	320.5 - 327.0	3	5	141	80	354	395	10	35	60	10	12
355.6	352.0 - 359.0	2.5	4	141	80	386	425	10	35	60	10	12
406.4	402.5 - 410.5	2	3	141	80	436	470	10	35	60	10	12
457.2	452.5 - 461.5	-	2	141	80	487	520	10	35	60	10	12
508.0	503.5 - 512.5	-	2	141	80	538	570	10	35	70	10	12
558.8	554.5 - 563.5	-	2	141	80	589	620	10	35	70	10	12
609.6	605.5 - 614.0	-	1	141	80	640	670	10	35	70	10	12

Right of alteration reserved.

Legend:

- W1 - W5 according to DIN Standard 86128 (ASTM F1476 / F1548, ISO/NP-15837 / 15838).
- PS: Working pressure considering the applications loads.
- PN: Nominal pressure, includes four times safety factor, for applications that require authorisation of classification societies (e.g. ABS, DNV, etc.)
- * Property class 12.9, Dacromet 500 (zinc-chromate with integrated lubricant).
- ** The pressure values are valid on radial rigid carbon steel pipes under static loads (for minimum wall thickness of pipes see p. 26 or contact factory).

Remarks:

- AD 26.9 - 60.3 mm with one screw.
- Follow fitting / disassembly instructions.
- Test pressure = 1,5 x nominal pressure
- Weight of the pipe couplings see separate packing specifications.
- Strip insert is required when gap between pipe ends is excessive, in presence of swelling, vacuum/depression (suction line), or external pressure.
- Strip inserts are available, under separate order, at additional costs.